

# MCerberus® Water Sensors

## The HVAC Monitoring Watchdog

The MCerberus® HVAC Monitoring System provides multiple solutions for detecting water in the HVAC drain pan and/or HVAC condensate line. These solutions apply to both residential as well as commercial installations with the following features:

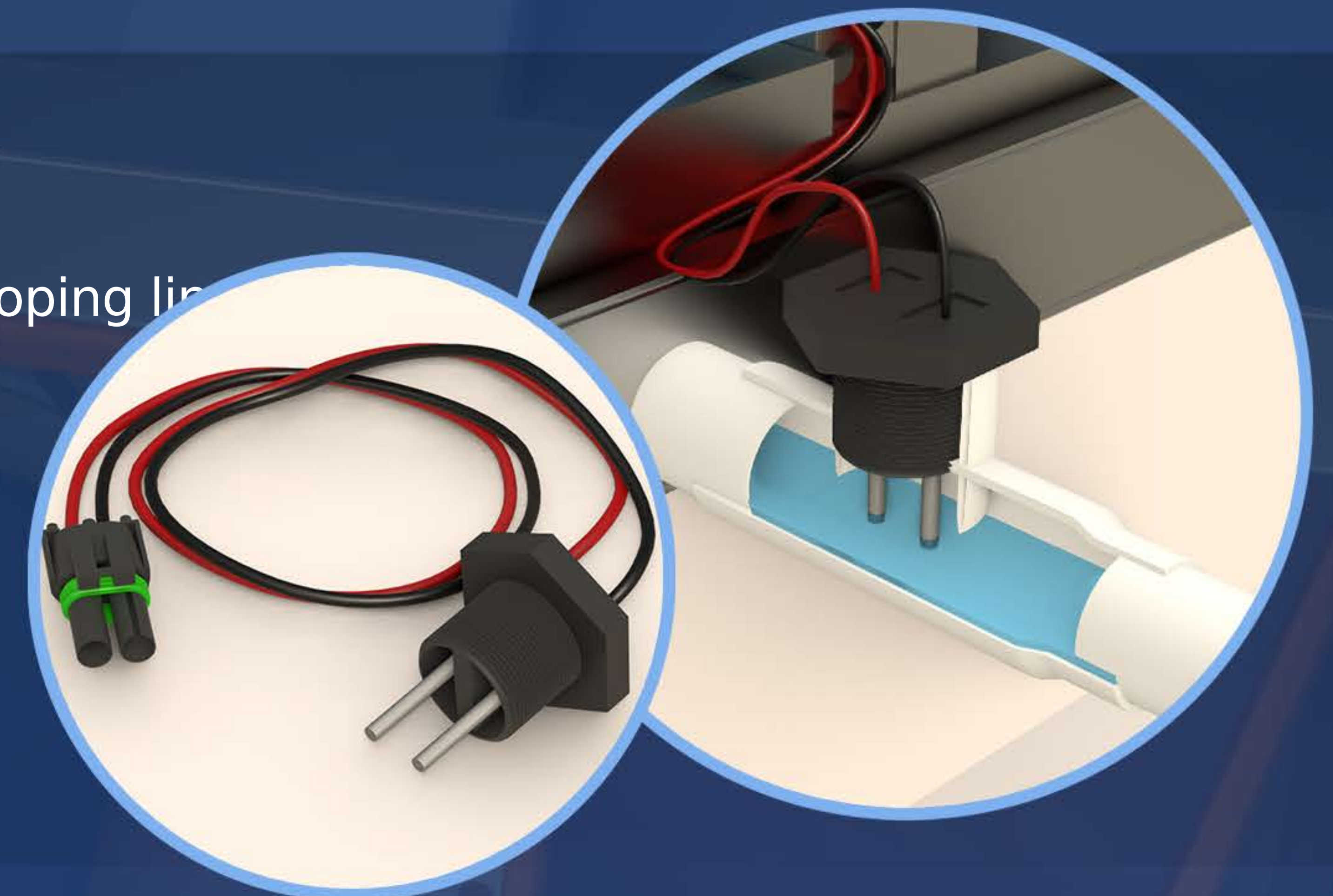
- Water Sensor system installs completely external to the HVAC system. There is no need to wire the water sensor system into the HVAC thermostat wires. Sensors may be installed/uninstalled without the requirement of shutting the HVAC unit down.
- Water Sensor and extension harness include keyed weatherpack connectors which eliminates any possibility of miswiring during installation.
- Electrical system is low voltage and low current
- Tray water sensor models capable of detecting 1/16 inch of water depth. By placing the water sensor at the low point of the water tray early detection of water may be enabled. Early water detection allows rapid response and correction of the issue rather than having the HVAC shutting down with zero notification.
- HVAC Monitoring System is capable of two water sensor installation (tray and condensate line) providing simultaneous monitoring of both elements.
- Water detection alerts are sent via email and/or via mobile app if installed on your Smartphone. User may directly see water sensor system output voltage via the mobile application.

### WTR-001 Condensate line water sensor

For installation on primary drain and/or auxillary drain outlets. It can be installed on a sloping line and does not need to be level or plumb.

Inline, low voltage condensate overflow water detection sensor used for detecting clogged air conditioning condensate drains.

Includes 8 foot, 22 AWG wires automotive grade extension harness with sealed Weatherpack connectors. Optimize sensor electrodes that include a mechanical barrier between the two elements virtually eliminating false alerts.



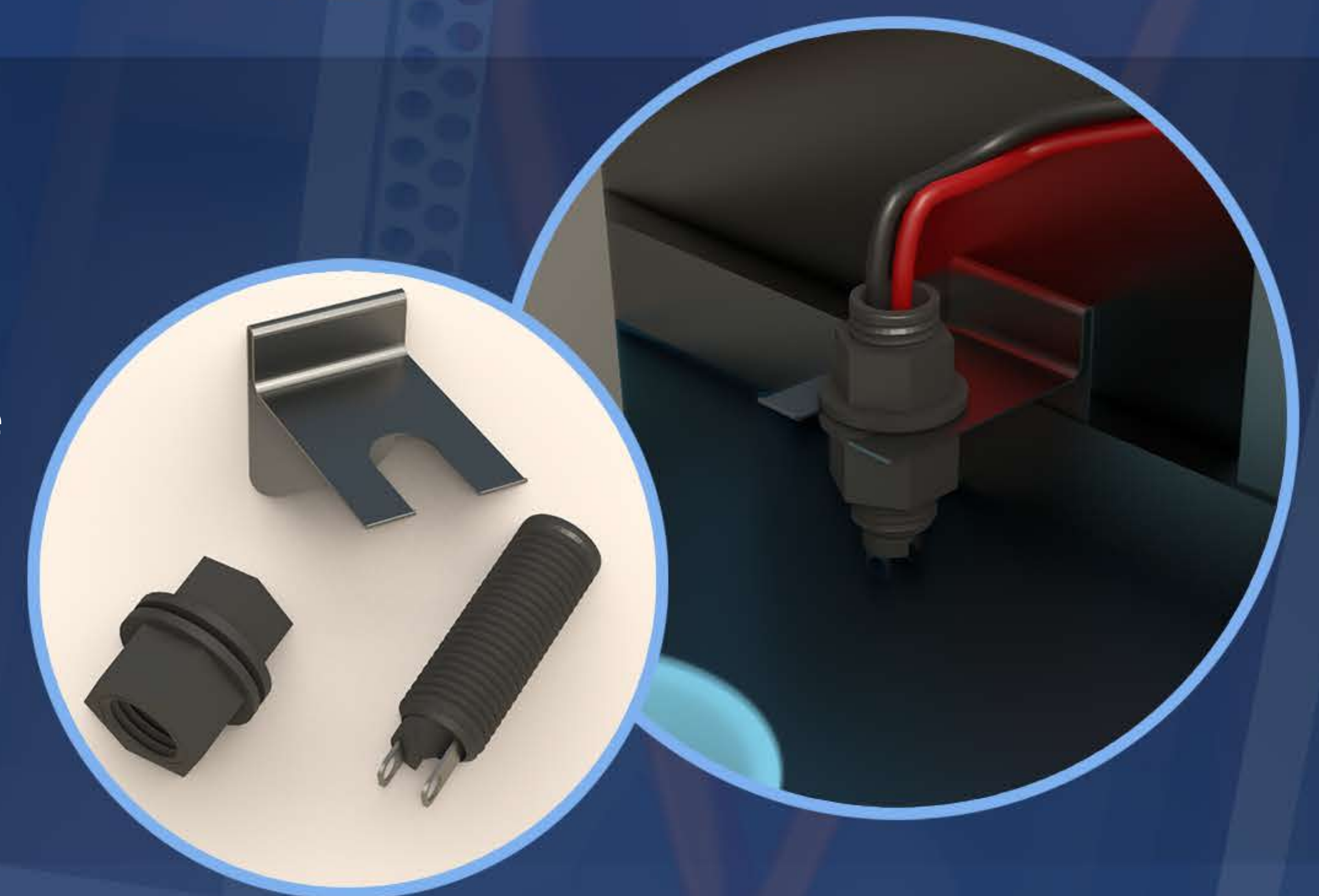
### WTR-002 Drain Pan Sensor

For installation on Primary and Auxillary Drain Pans

The specially designed stainless steel mounting bracket clips firmly over the end of the drain pan. The small profiled water sensor may be installed on primary or auxillary drain pans.

There are no moving parts to break down or to become clogged like float sensors.

Sensor elements are separated by a mechanical barrier resulting in an instant on/instant off water detection capability.



### WTR-003 Drain Pan Sensor

For installation on Primary and Auxillary Drain Pans

Specially designed to detect and alert to initial water events where the water level is on the order of 1/16 inch high. Placing this sensor at the low point on the drain pan will result in the earliest detection of water as compared to any other water sensor commercially available.

Optimize sensor electrodes that include a mechanical barrier between the two elements virtually eliminating false alerts. Brackets, sensor elements, and all fasteners are all stainless steel resulting in a water sensor that will have a long installation life - basically on the same order of magnitude as the HVAC unit itself.

